



Apr 02, 2025 11:58 CEST

Eutelsat ramping up LEO-enabled aviation services with high-speed, low latency connectivity

- *Eutelsat's OneWeb LEO services are now live and operational for commercial and business aviation customers.*
- *Air Canada and Embraer Phenom 300 amongst the first to fly using Eutelsat's services.*
- *Backlog currently represents over 1,000 aircraft.*

Paris, 2 April 2025 - Eutelsat (ISIN: FR0010221234 - Euronext Paris / London Stock Exchange: ETL) today announced its OneWeb low Earth orbit (LEO) services for commercial and business aviation are now live and operational,

with over 100 certified antenna installations completed and the first commercial and business aircraft now flying using Eutelsat's OneWeb LEO connectivity.

In addition to its long-established geostationary (GEO) aviation services, Eutelsat is working with Intelsat, Hughes and Panasonic Avionics to deliver LEO and multi-orbit solutions to the commercial aviation market. Air Canada is the first commercial airline to deploy the multi-orbit GEO/LEO service, through Intelsat, with additional world-class carriers also beginning installations and commercial flights with multi-orbit solutions on board.

In business aviation, Eutelsat has partnered with industry leader, Gogo, to equip the first Embraer Phenom 300 with LEO services, while aircraft manufacturer, Textron, will be installing solutions on the Cessna Citation Longitude, Latitude and Ascend models as well as Airbus Corporate Jets on all Airbus ACJ types.

Together, Eutelsat's aviation services have a combined backlog of over 1,000 aircraft scheduled for installation.

"Eutelsat's LEO aviation services, powered by the OneWeb constellation, provide high speed, low latency, and premium performance to meet the evolving connectivity needs of airlines and business jets globally," said Cyril Dujardin, President of the Connectivity Business Unit at Eutelsat. "With a robust backlog and expanding reach across both commercial and business aviation, we are confident in the long-term growth of our aviation services. We believe that a fully integrated IFC ecosystem will transform in-flight connectivity, providing airlines with

flexible, responsible, and scalable solutions that enhance the passenger experience and support the future of air travel worldwide."

About Eutelsat Group

Eutelsat Group is a global leader in satellite communications, delivering connectivity and broadcast services worldwide. The Group was formed through the combination of the Company and OneWeb in 2023, becoming the first fully integrated GEO-LEO satellite operator with a fleet of 35

Geostationary satellites and a Low Earth Orbit (LEO) constellation of more than 600 satellites. The Group addresses the needs of customers in four key verticals of Video, where it distributes more than 6,500 television channels, and the high-growth connectivity markets of Mobile Connectivity, Fixed Connectivity, and Government Services. Eutelsat Group's unique suite of in-orbit assets and ground infrastructure enables it to deliver integrated solutions to meet the needs of global customers. The Company is headquartered in Paris and the Eutelsat Group employs more than 1,500 people across more than 50 countries. The Group is committed to delivering safe, resilient, and environmentally sustainable connectivity to help bridge the digital divide. The Company is listed on the Euronext Paris Stock Exchange (ticker: ETL) and the London Stock Exchange (ticker: ETL)

Find out more at www.eutelsat.com

Media enquiries

Joanna Darlington
Tel. +33 674 521 531
jdarlington@eutelsat.com

Anita Baltagi
Tel. +33 +33 643 930 178
abaltagi@eutelsat.com

Katie Dowd
Tel. +1 202 271 2209
kdowd@oneweb.net

Investors

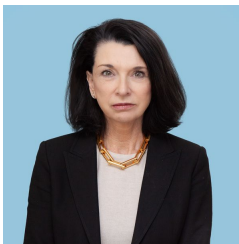
Joanna Darlington
Tel. +33 674 521 531
jdarlington@eutelsat.com

Hugo Laurens Berge
Tel. +33 670 80 95 58
hlaurensberge@eutelsat.com

DISCLAIMER

The forward-looking statements included herein are for illustrative purposes only and are based on management's views and assumptions as of the date of this document. Such forward-looking statements involve known and unknown risks. For illustrative purposes only, such risks include but are not limited to: risks related to the health crisis; operational risks related to satellite failures or impaired satellite performance, or failure to roll out the deployment plan as planned and within the expected timeframe; risks related to the trend in the satellite telecommunications market resulting from increased competition or technological changes affecting the market; risks related to the international dimension of the Group's customers and activities; risks related to the adoption of international rules on frequency coordination and financial risks related, inter alia, to the financial guarantee granted to the Intergovernmental Organization's closed pension fund, and foreign exchange risk. Eutelsat Communications expressly disclaims any obligation or undertaking to update or revise any projections, forecasts or estimates contained in this document to reflect any change in events, conditions, assumptions, or circumstances on which any such statements are based, unless so required by applicable law. The information contained in this document is not based on historical fact and should not be construed as a guarantee that the facts or data mentioned will occur. This information is based on data, assumptions and estimates that the Group considers as reasonable.

Contacts

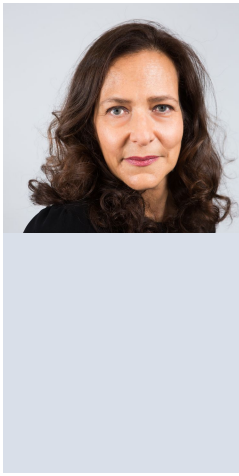


Joanna Darlington

Chief Communications and Investor Relations Officer

jdarlington@eutelsat.com

+33 674 521 531



Anita Baltagi

External Communications Director

abaltagi@eutelsat.com

+33 643 930 178

Katie Dowd

Director Government & Corporate Affairs Communication

kdowd@oneweb.net

+1 202 2712 209